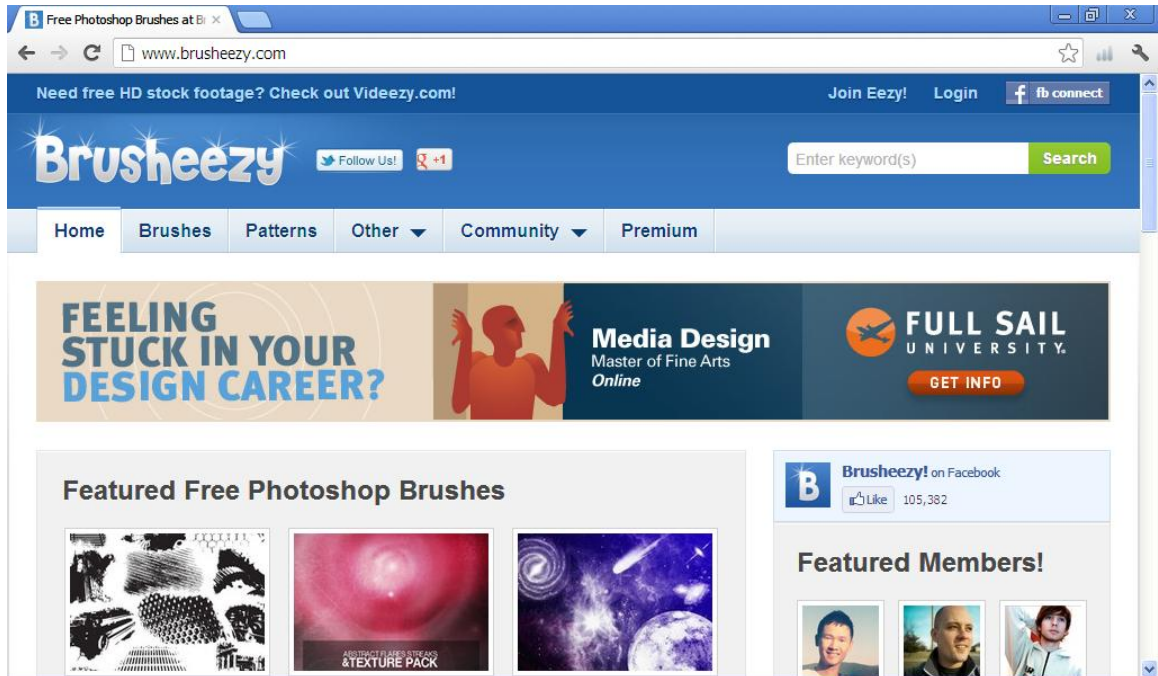


## Advanced Photography

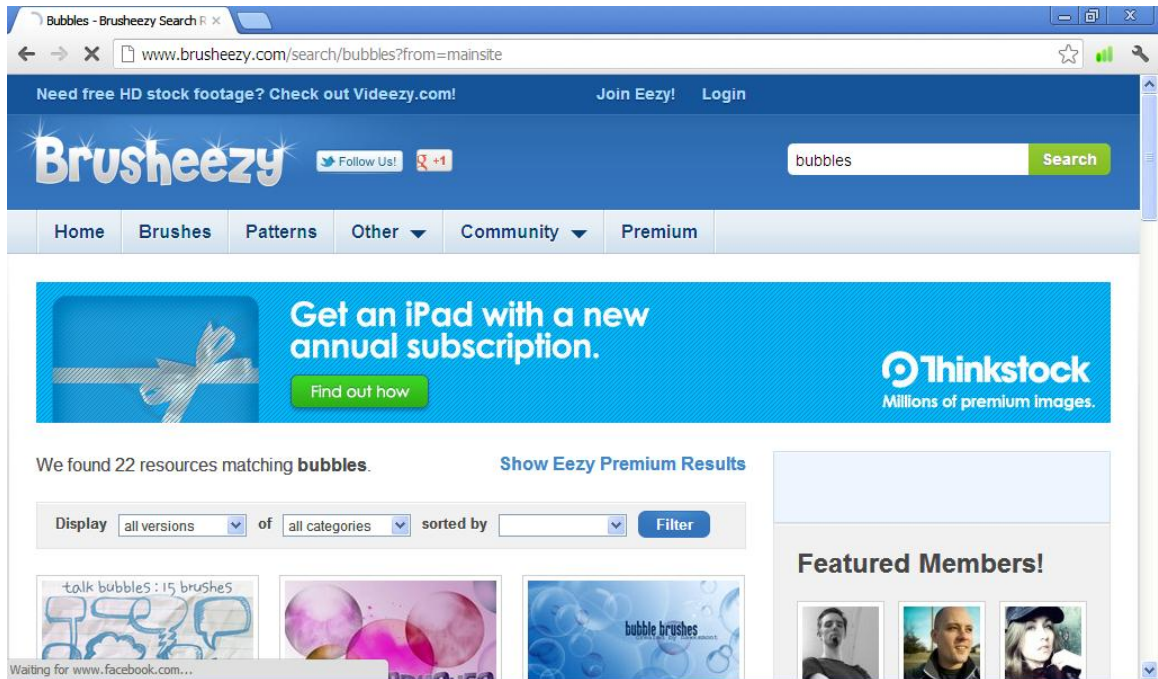
### Installing Brushes in Photoshop

(Note: This works for patterns, textures, shapes, styles, and gradients, as well).

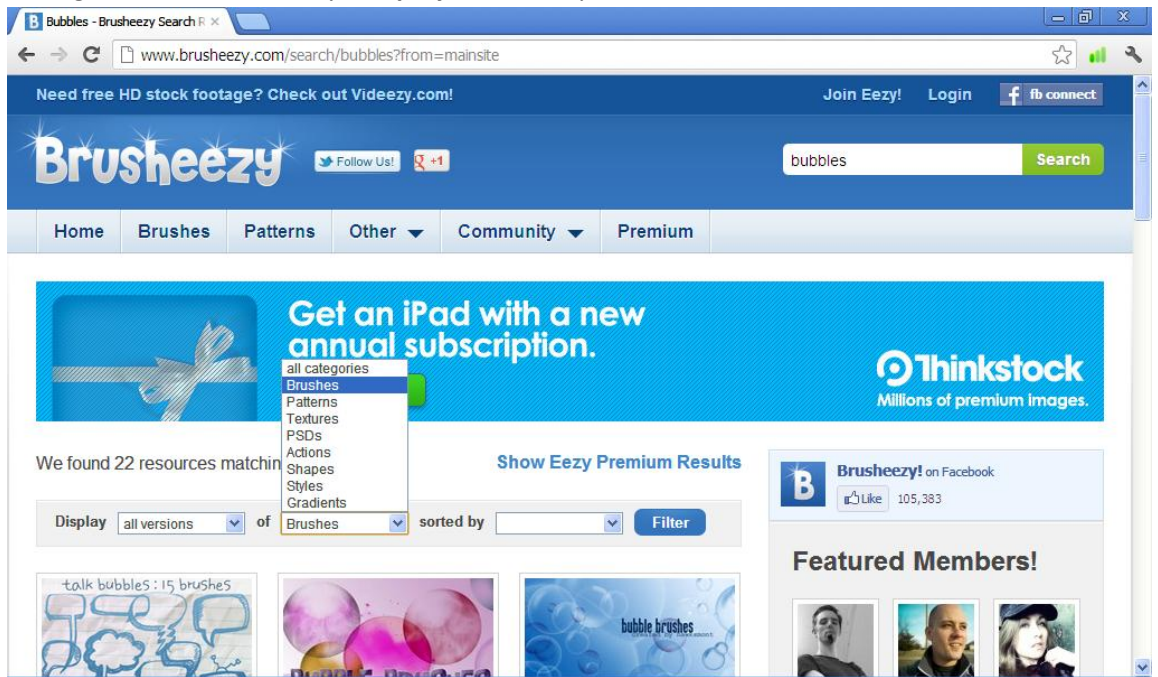
1. If you have Photoshop open, close the application. Brushes will not install if the application is open.
2. Navigate to Brusheezy.com.



3. In Search box, type the brush you are looking for. I used bubbles.

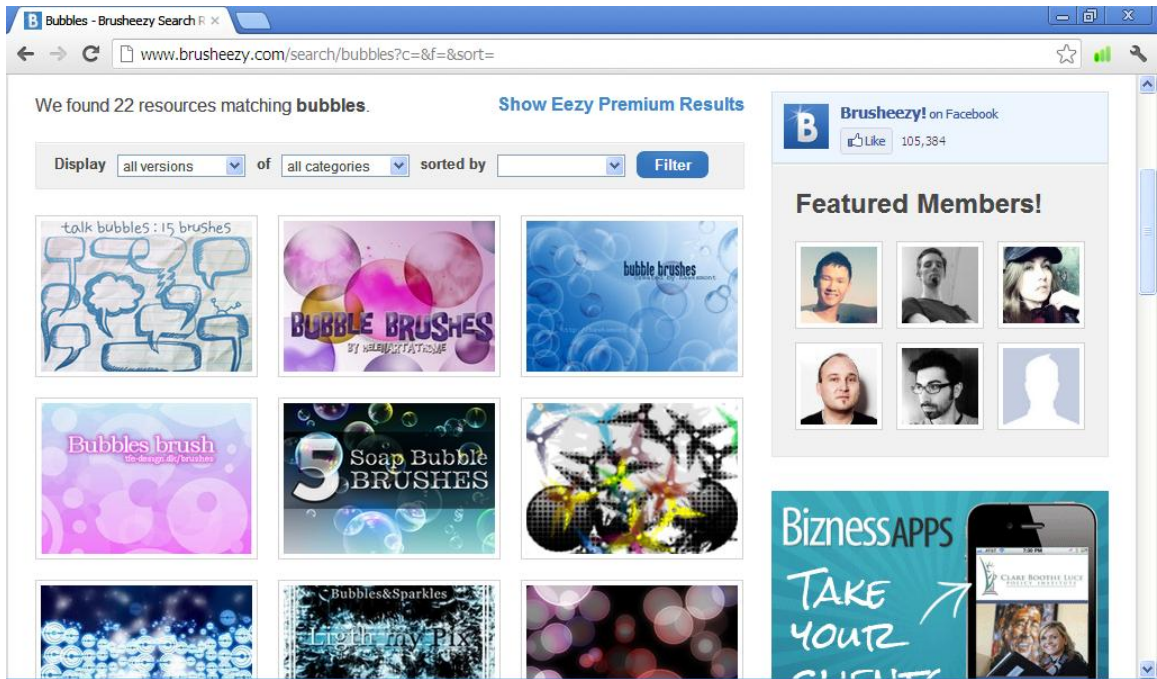


4. Now, go to the area that says **Display**. In the dropdown box next to "of" and select **Brushes**.

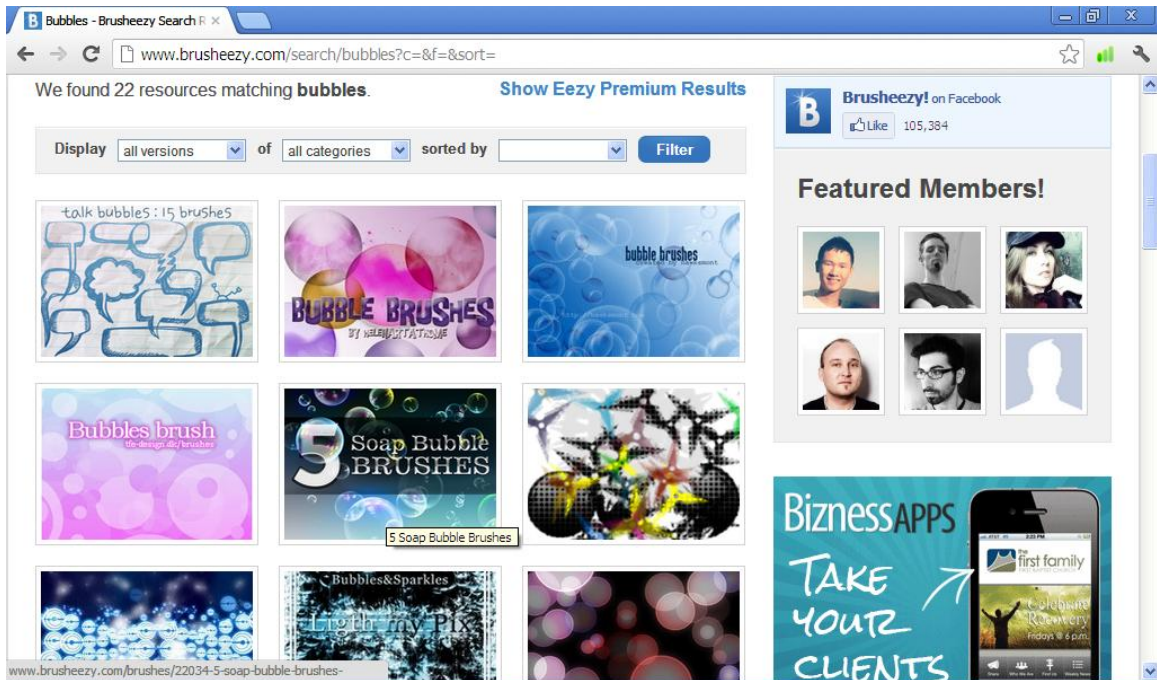


5. Click on **Filter**.

- The site displays your brush choices.

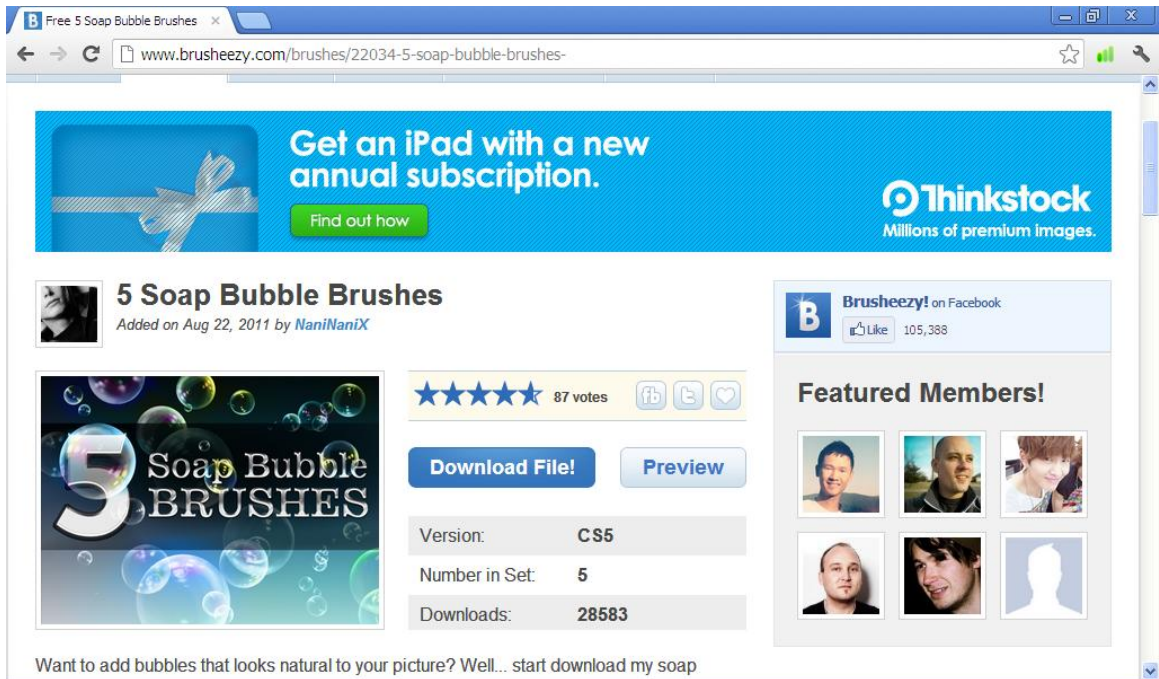


- Scroll through your options and select a brush pallet that looks good to you, and double-click it.

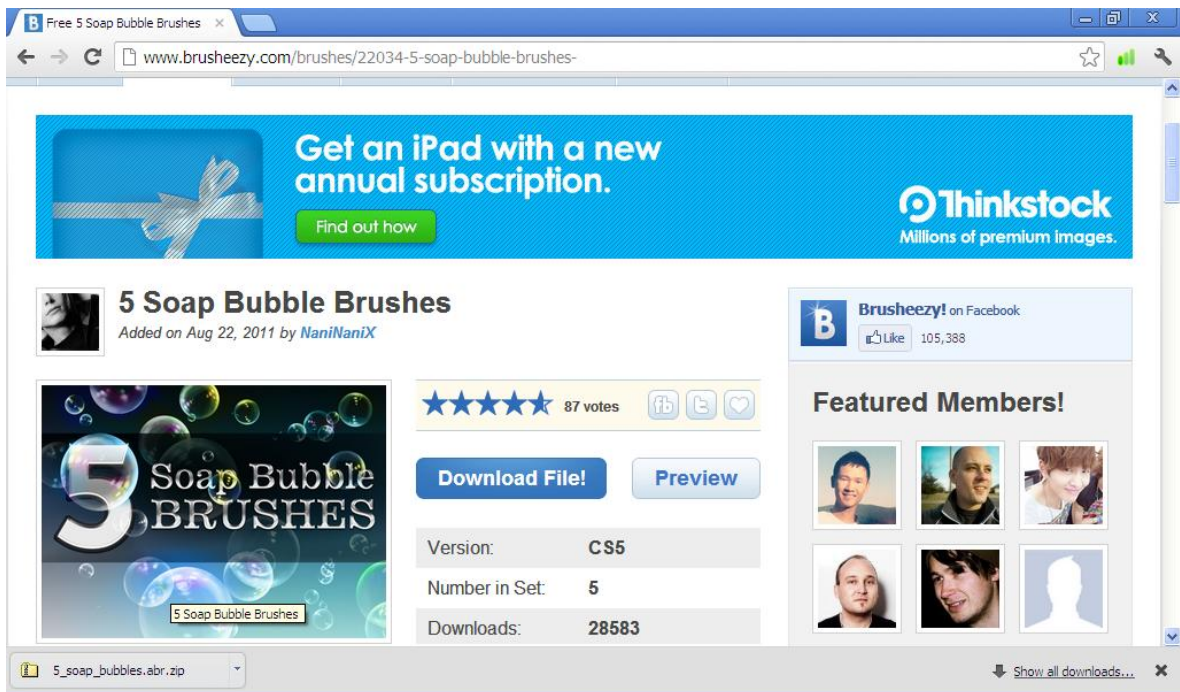




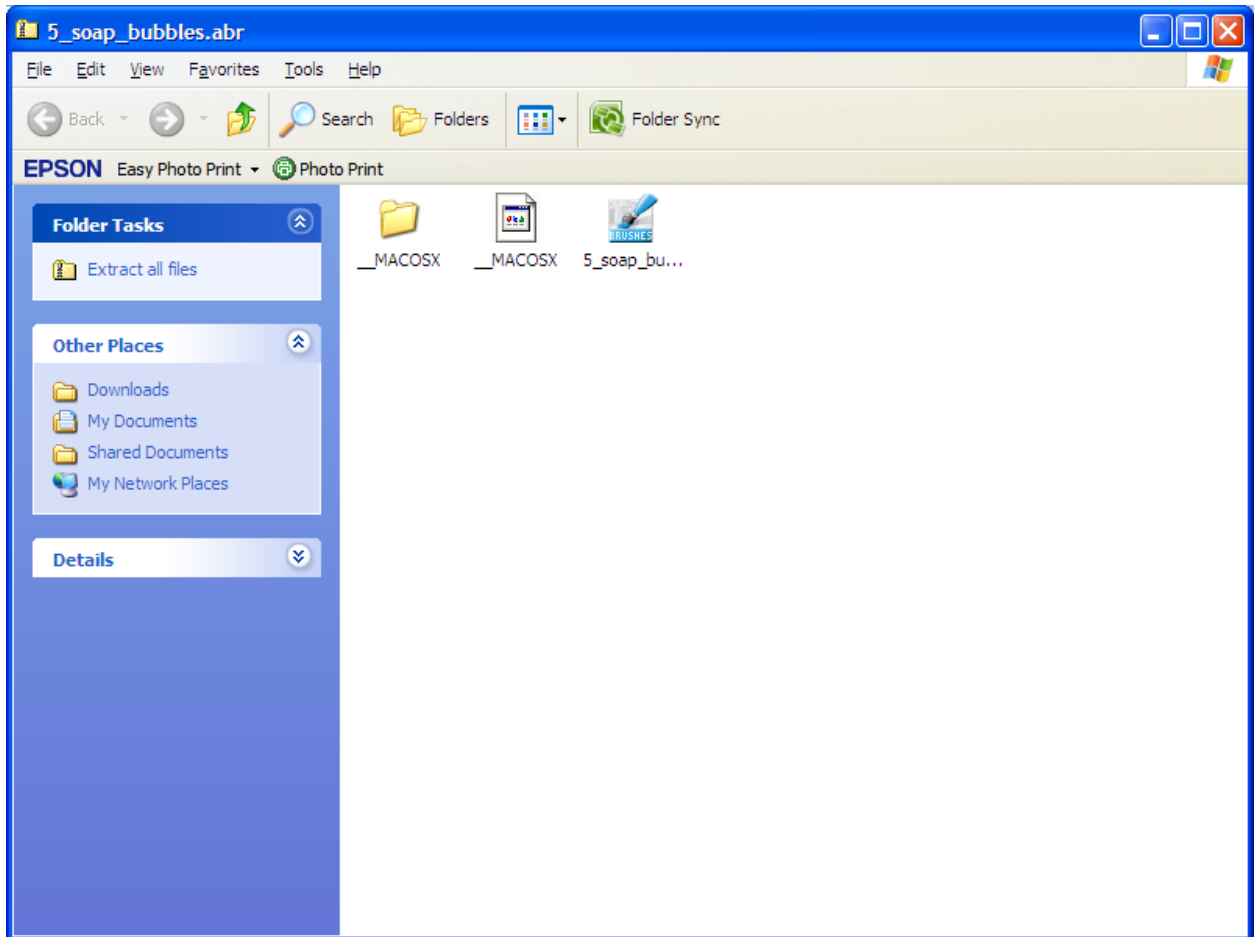
- When the Download panel appears, click **Download**.



- After the file downloads, find the zipped file icon at the bottom left of your screen and double-click it.



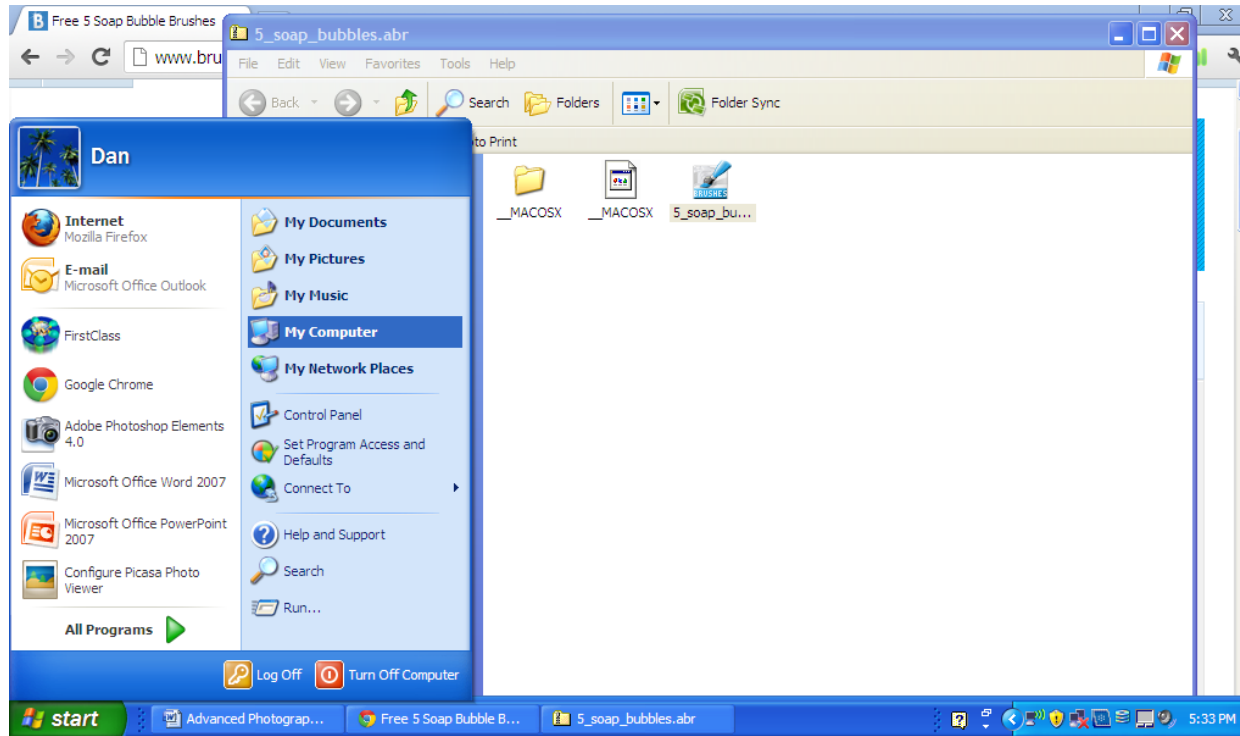
10. The zipped file containing your brush opens. Note: Do not use MAC brushes for Windows computers.



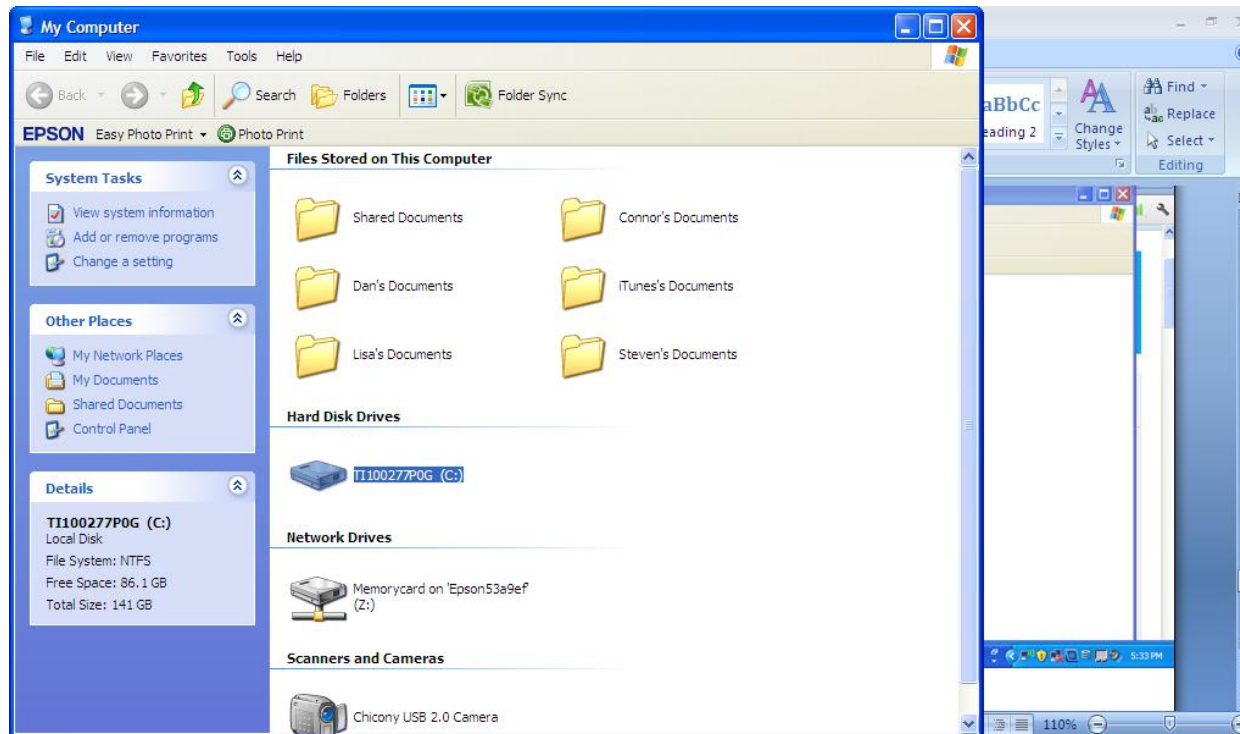
11. You can unzip the file by clicking **Extract All Files**, but most times you do not need to because the brush file is ready to install.

12. To install the brush, navigate as follows:

a. Go to **Start** and then **My Computer**.

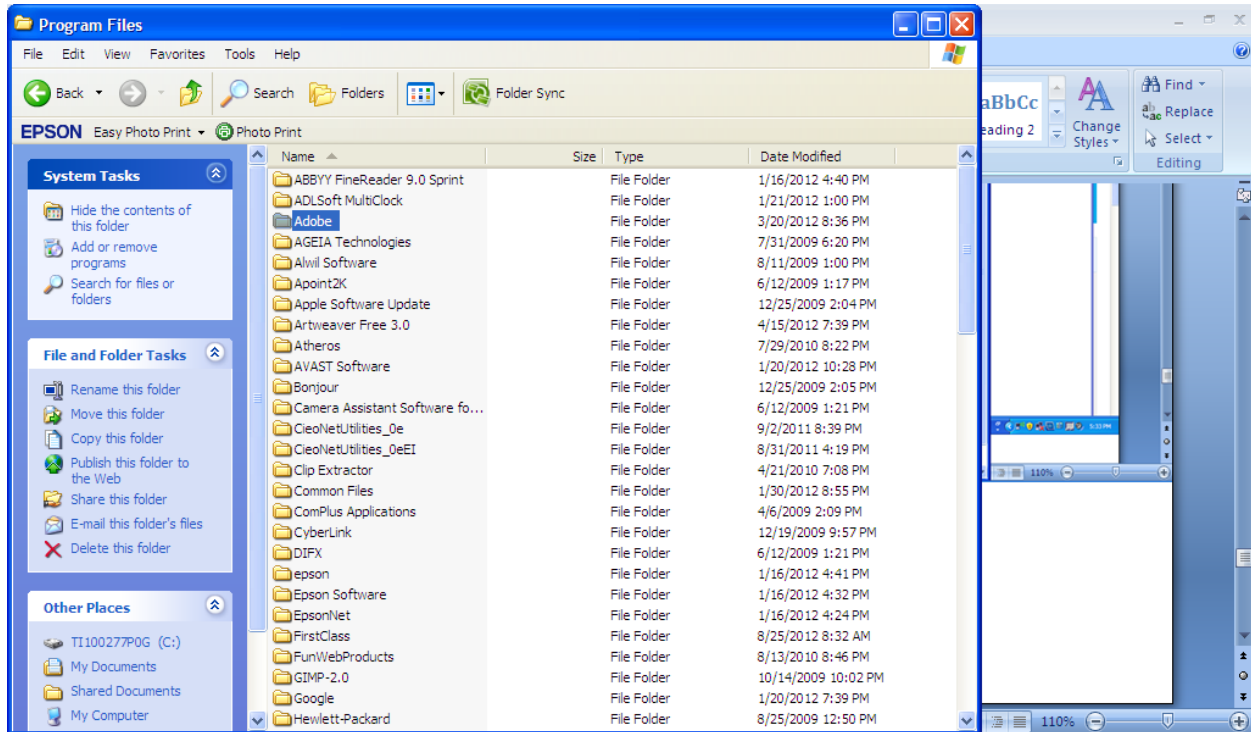


b. Double-click on **My Computer** and double-click on the **C: Drive** (this is the hard drive of your computer).

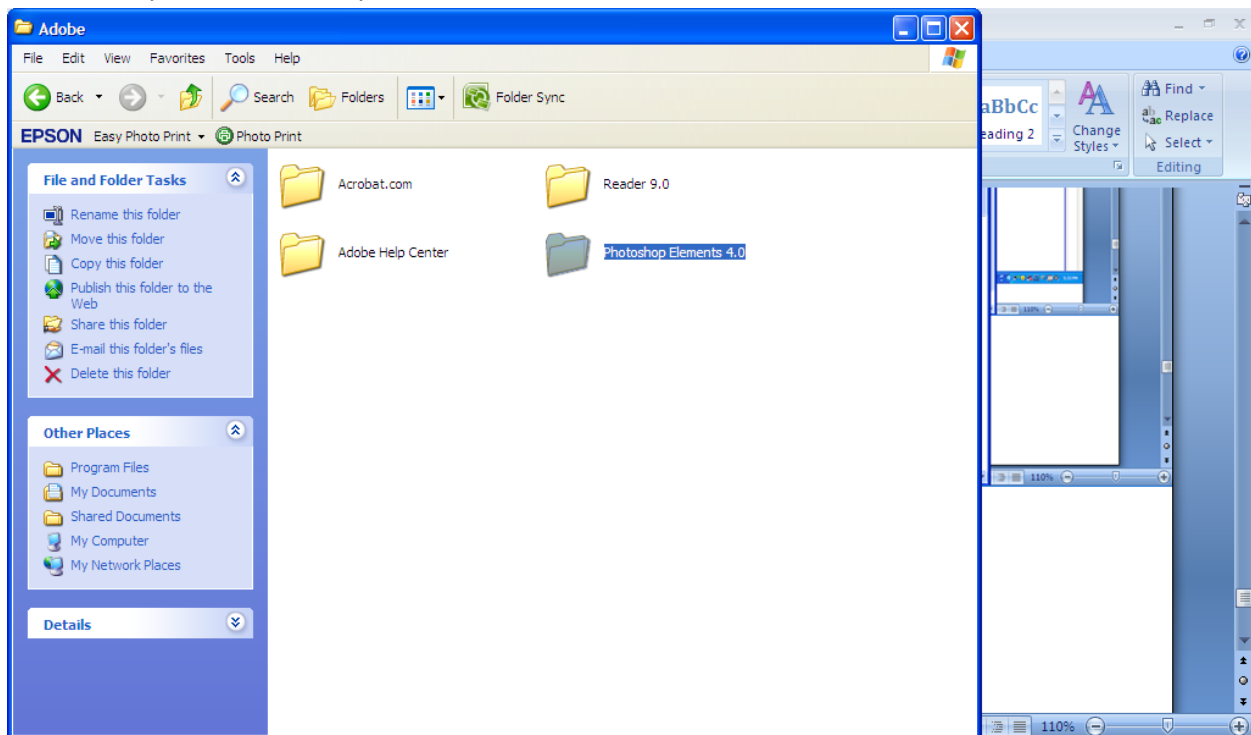


c. Now double-click on **Program Files**. This is where files for our applications, aka programs, are installed.

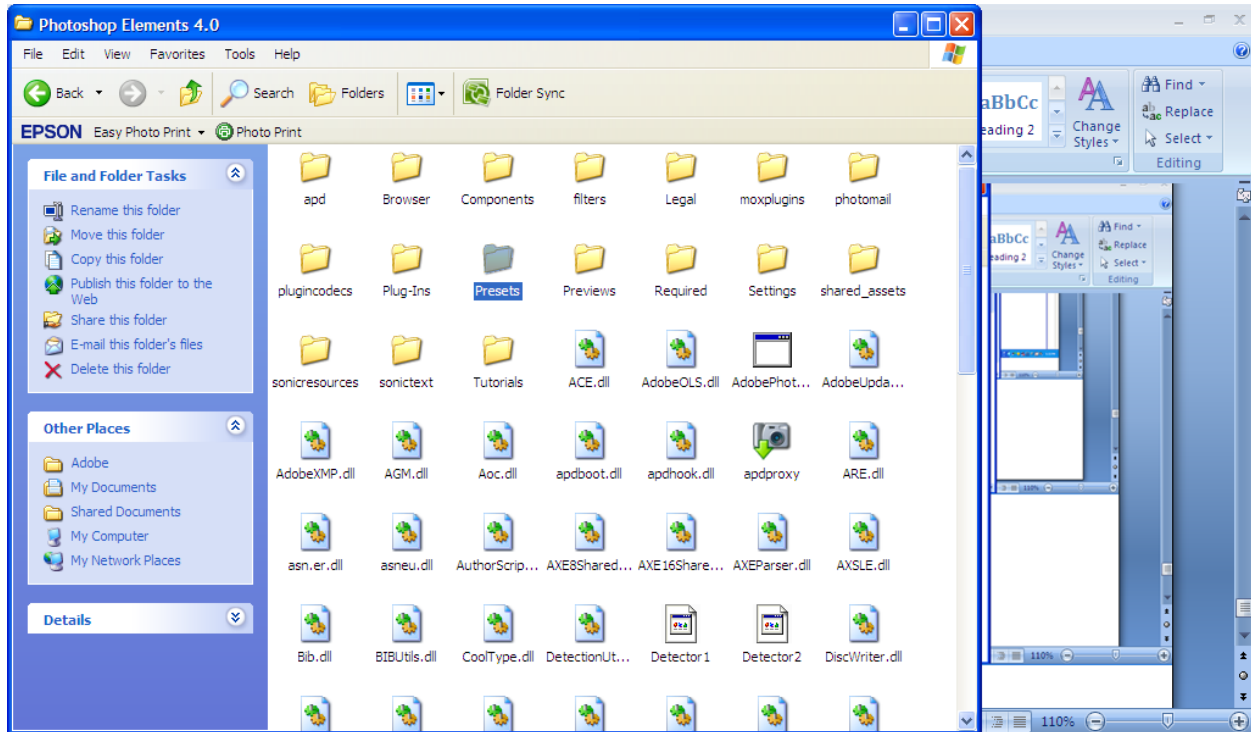
- d. Find **Adobe** and double-click the directory to open it.



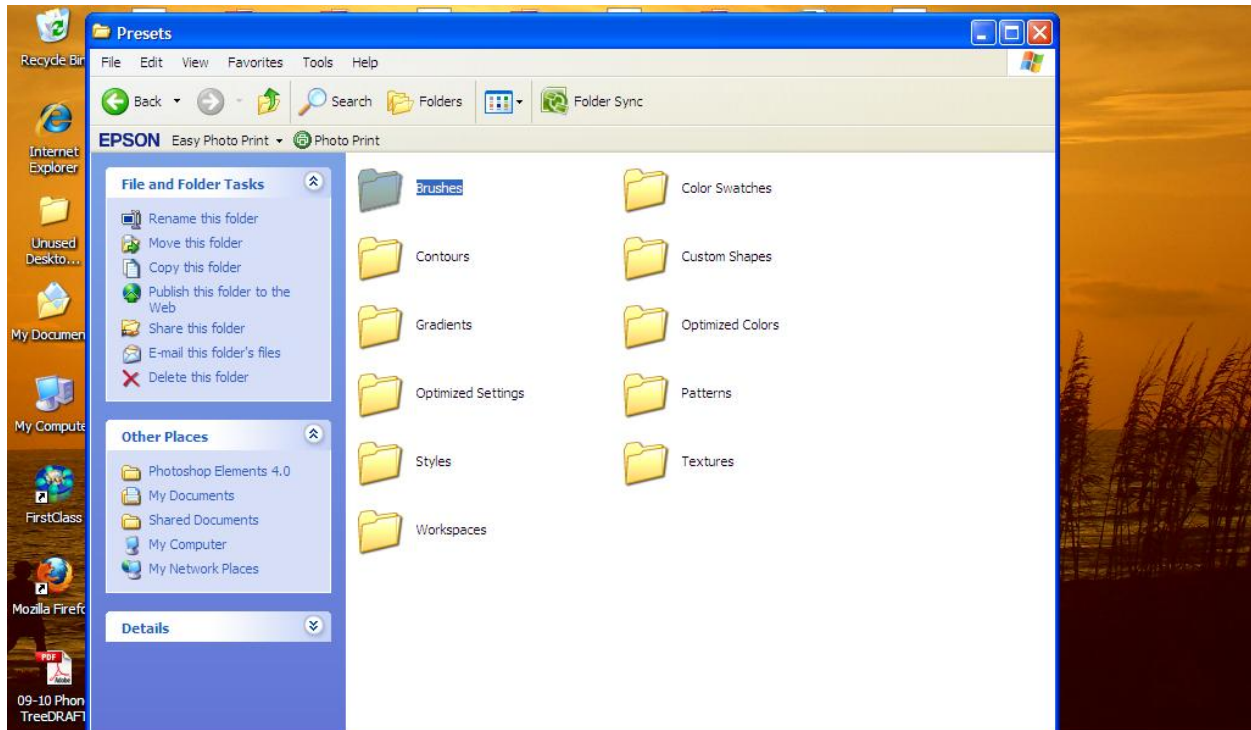
- e. Double-click on **Photoshop Elements 4.0**. You'll see other applications in this folder because they are also made by Adobe.



- f. Double-click the **Presets** directory to find the **Brushes** directory.

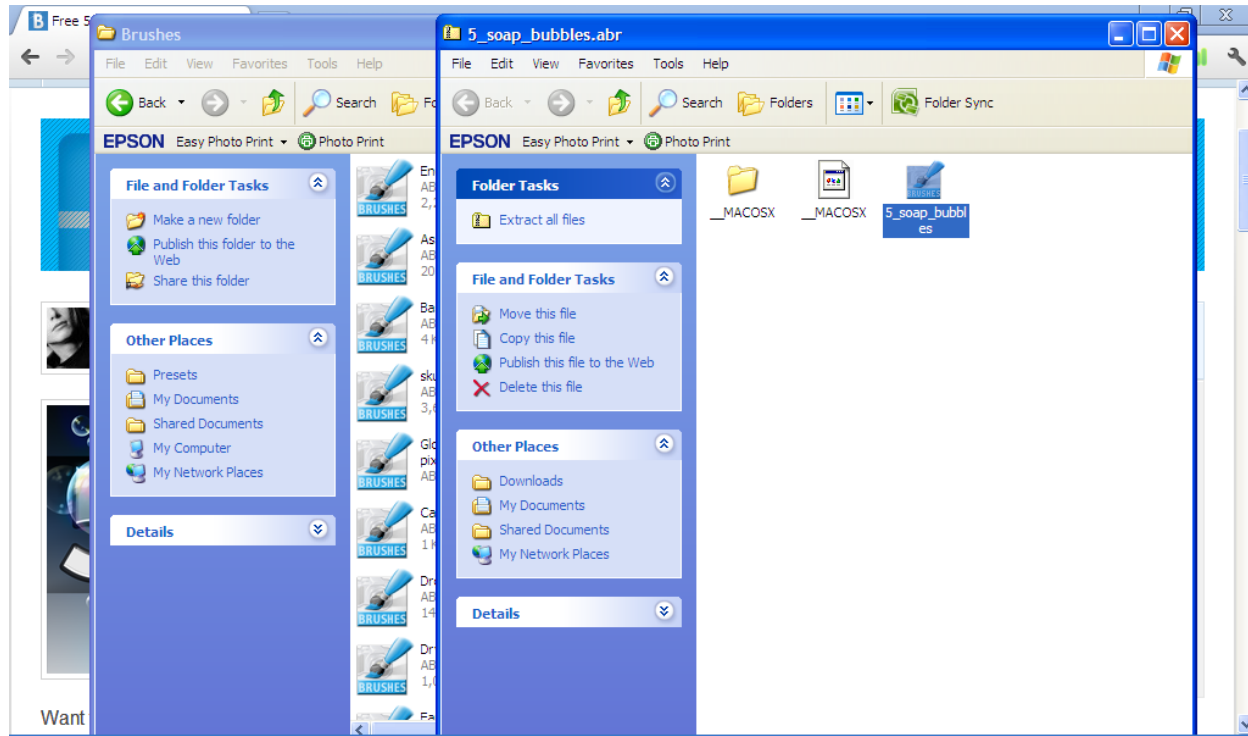


- g. Double-click the **Brushes** directory to open it.

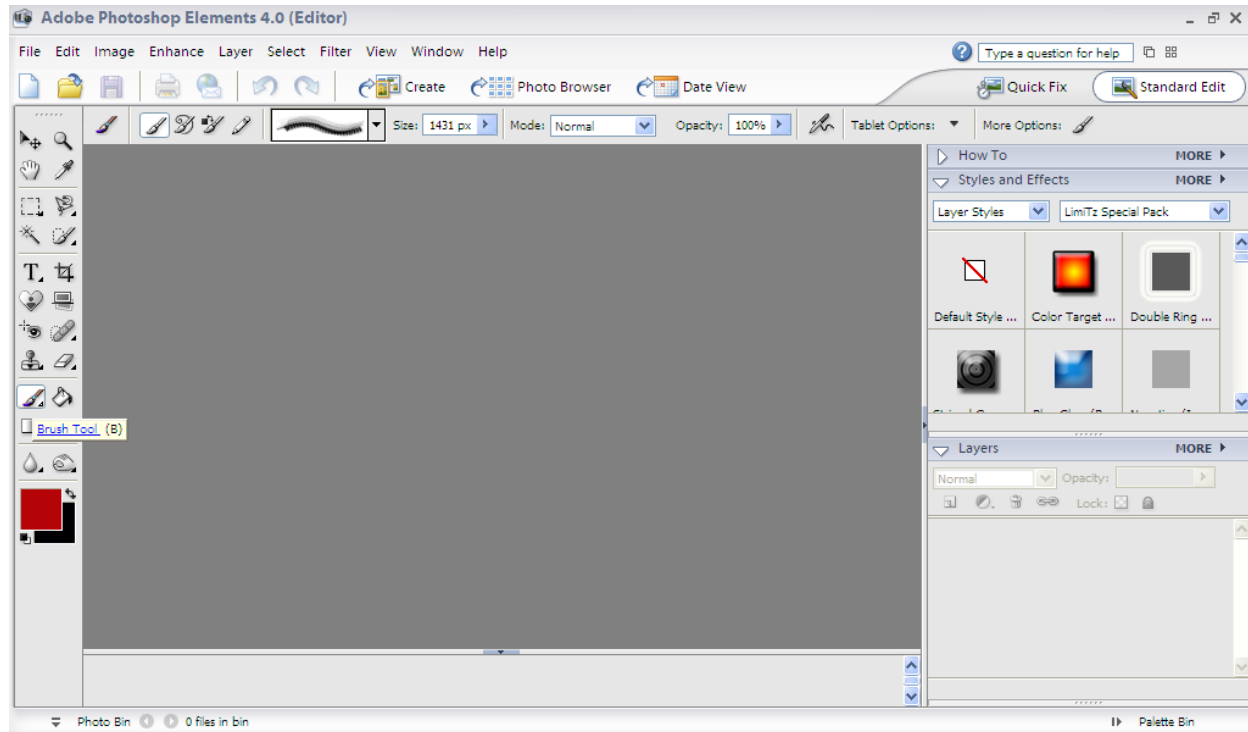




- h. Now, drag and drop the brush file you downloaded to the Brushes directory. If you want to, you can rename the brush after you install it in the Brushes directory.



- i. Save a copy of the brush you downloaded to your flash drive.
13. Open Photoshop.
  14. Find the new brush to make sure it is properly installed, as follows:
    - a. Select the **brush icon on the tool pallet.**



- b. Click on the brush dropdown box and look for the name of the brush you installed.  
Brushes are listed alphabetically,

