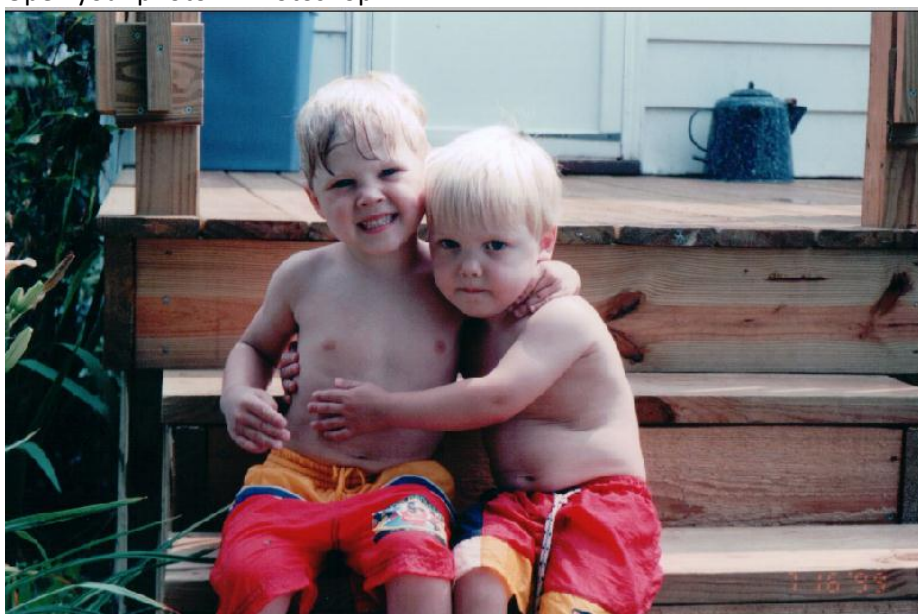


PHSC Photography

Retro Photo Technique

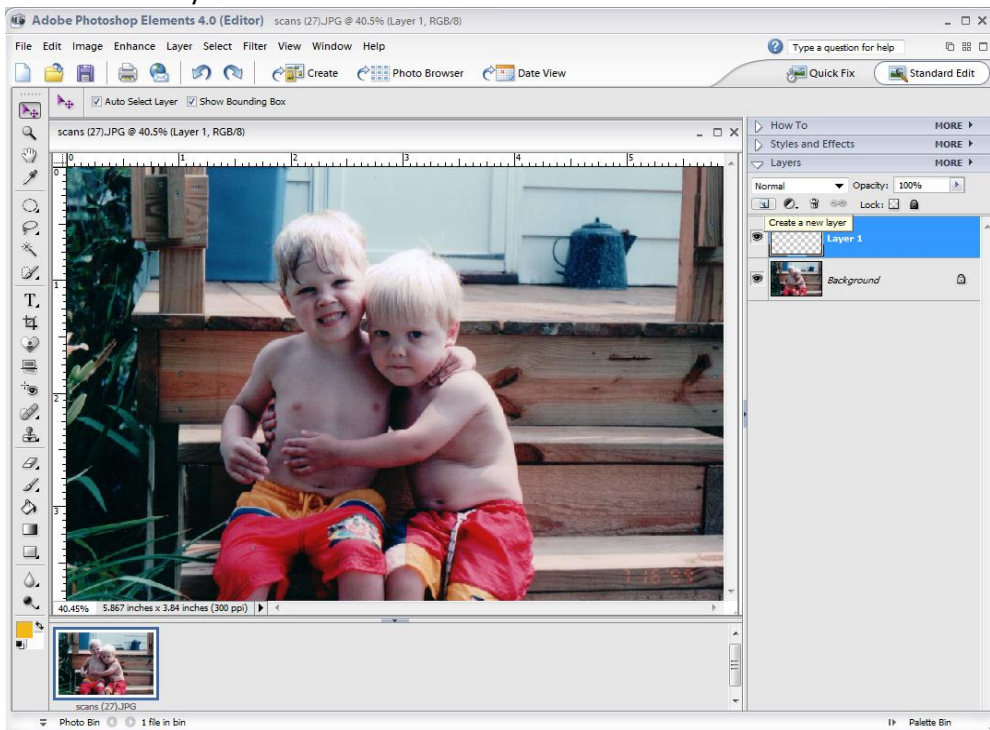


1. Open your photo in Photoshop.

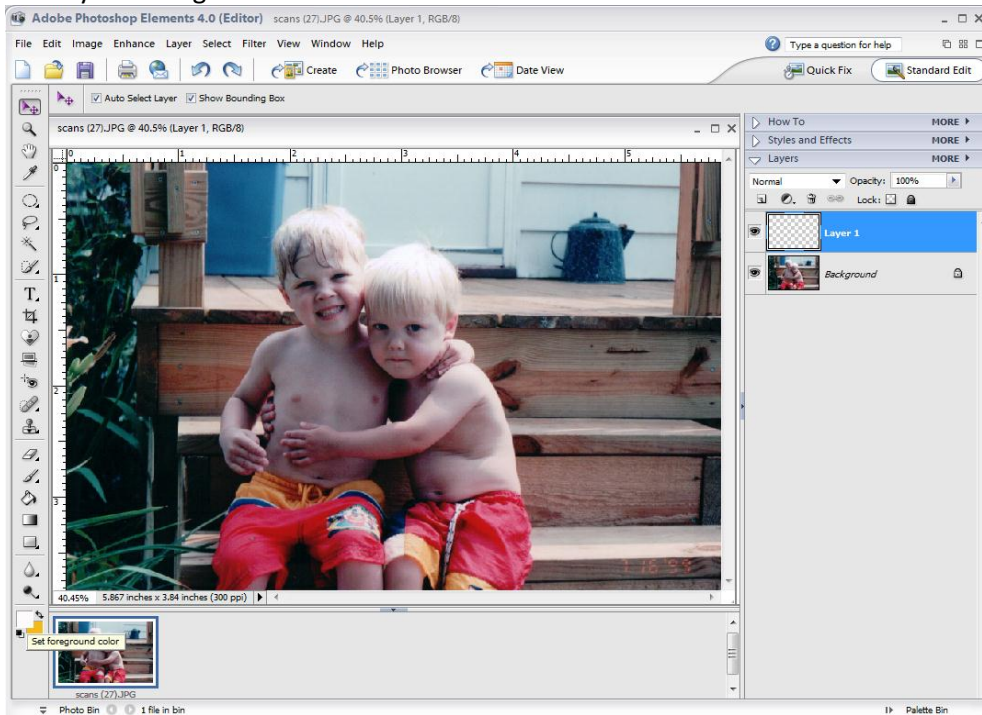


PHSC Photography

2. Create a new layer.

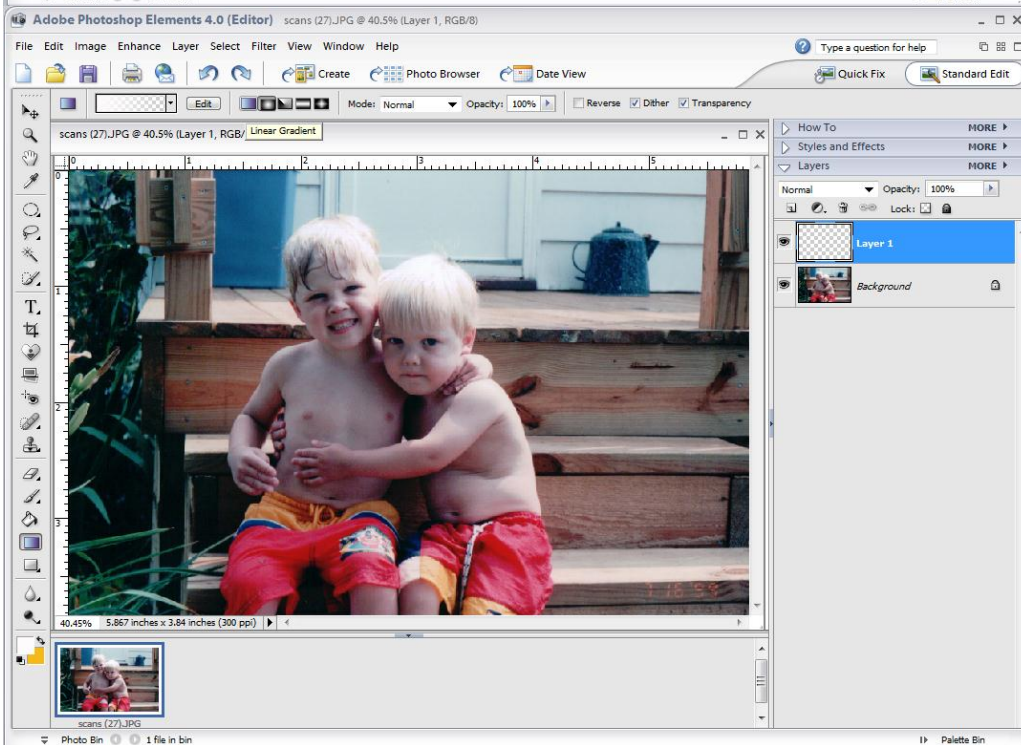
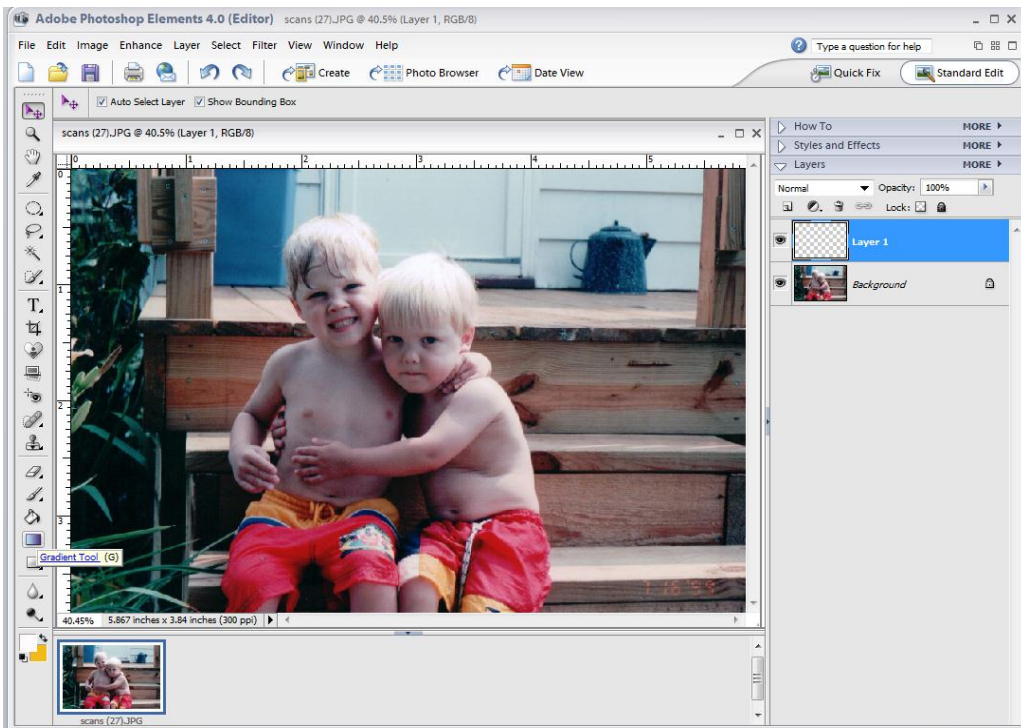


3. Make your Foreground color White.



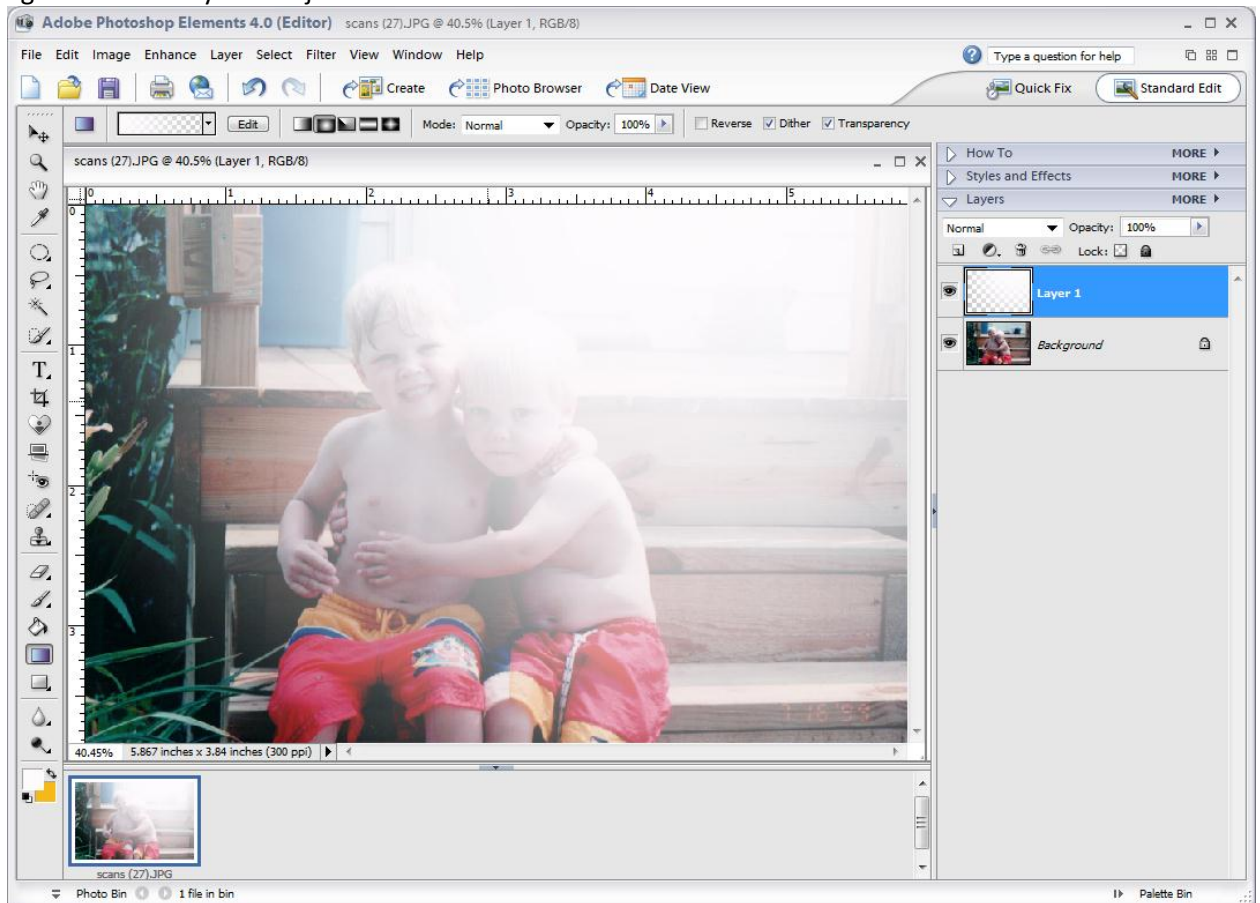
PHSC Photography

4. Place in a Linear Gradient.



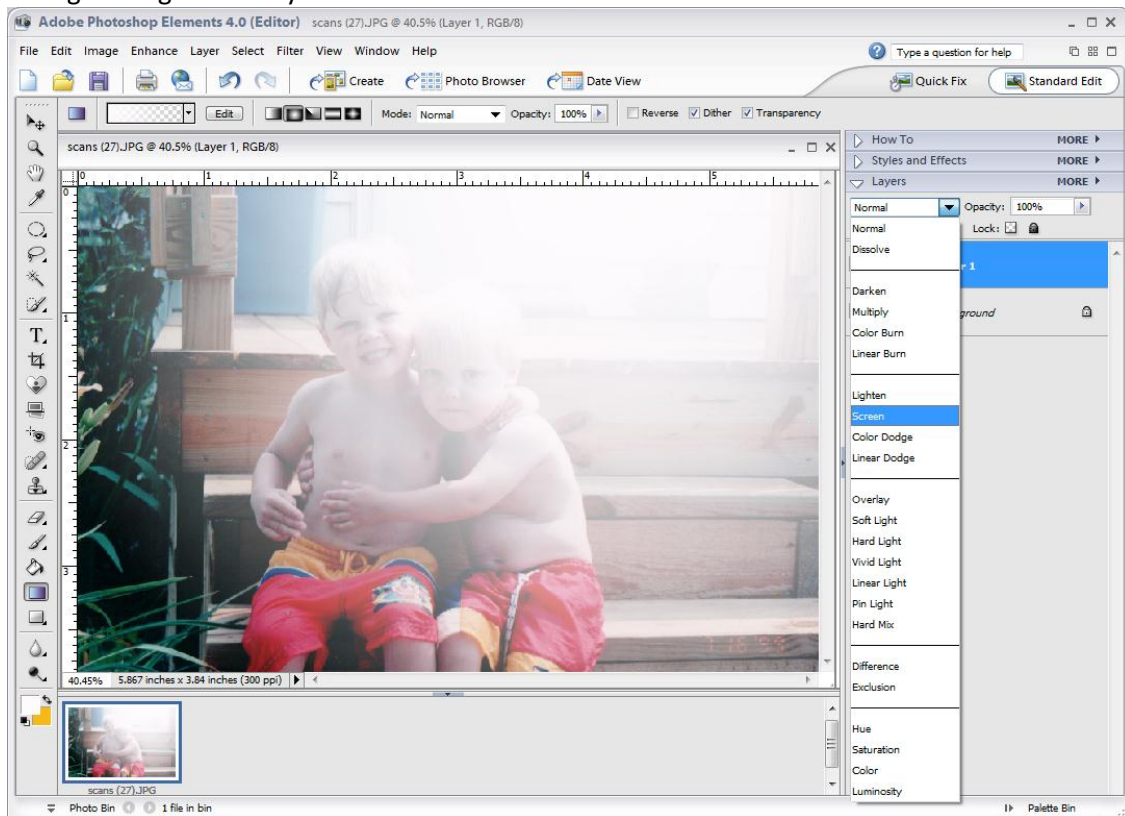
PHSC Photography

5. Draw the gradient on the new layer across your picture. Draw it in the same direction as the light source hits your subject.



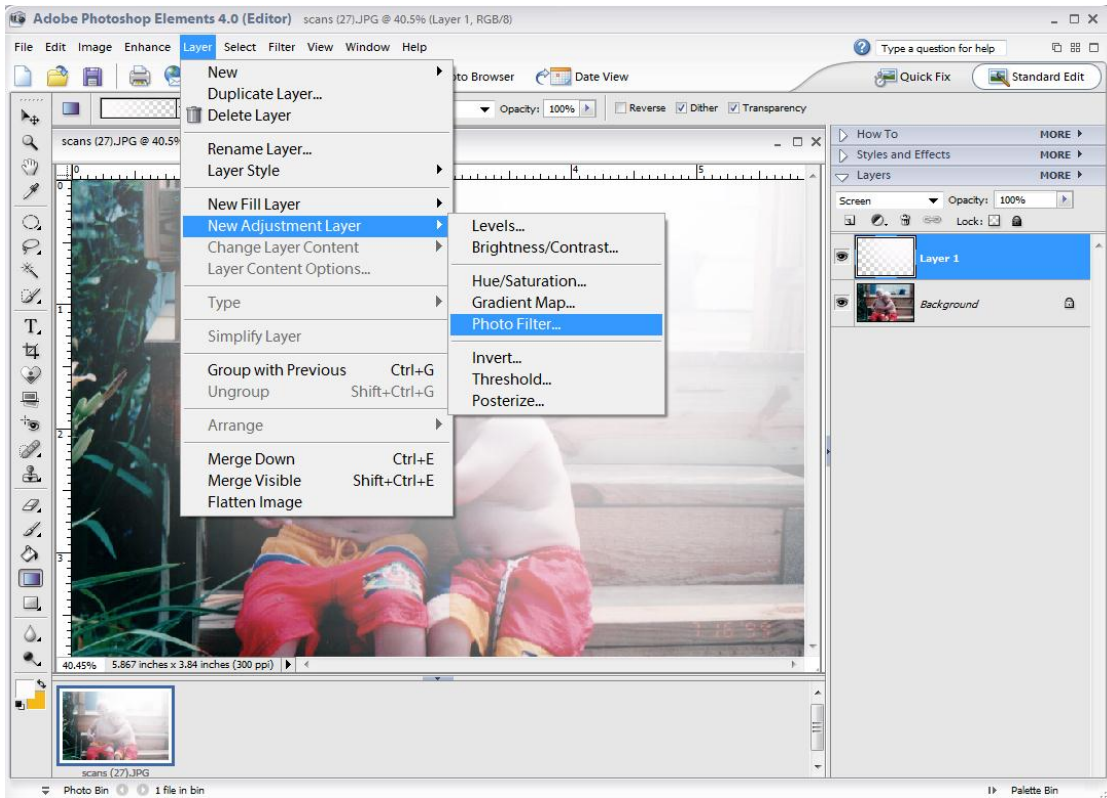
PHSC Photography

6. Change that gradient layer to Screen Mode.

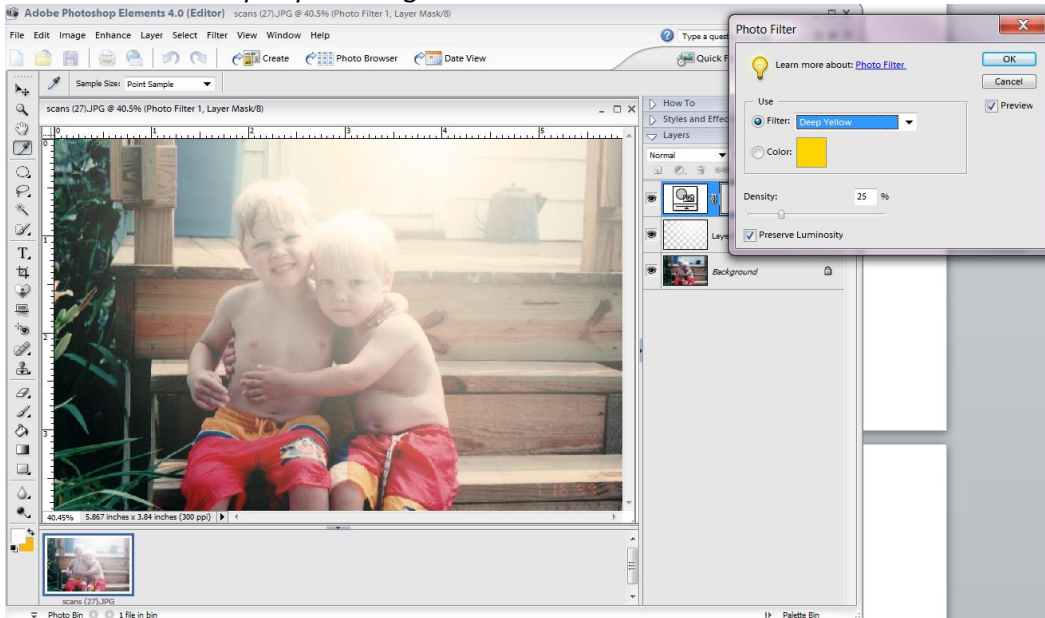


PHSC Photography

7. To add a New Adjustment Layer, navigate to Layers/New Adjustment Layer/Photo Filter, then OK.

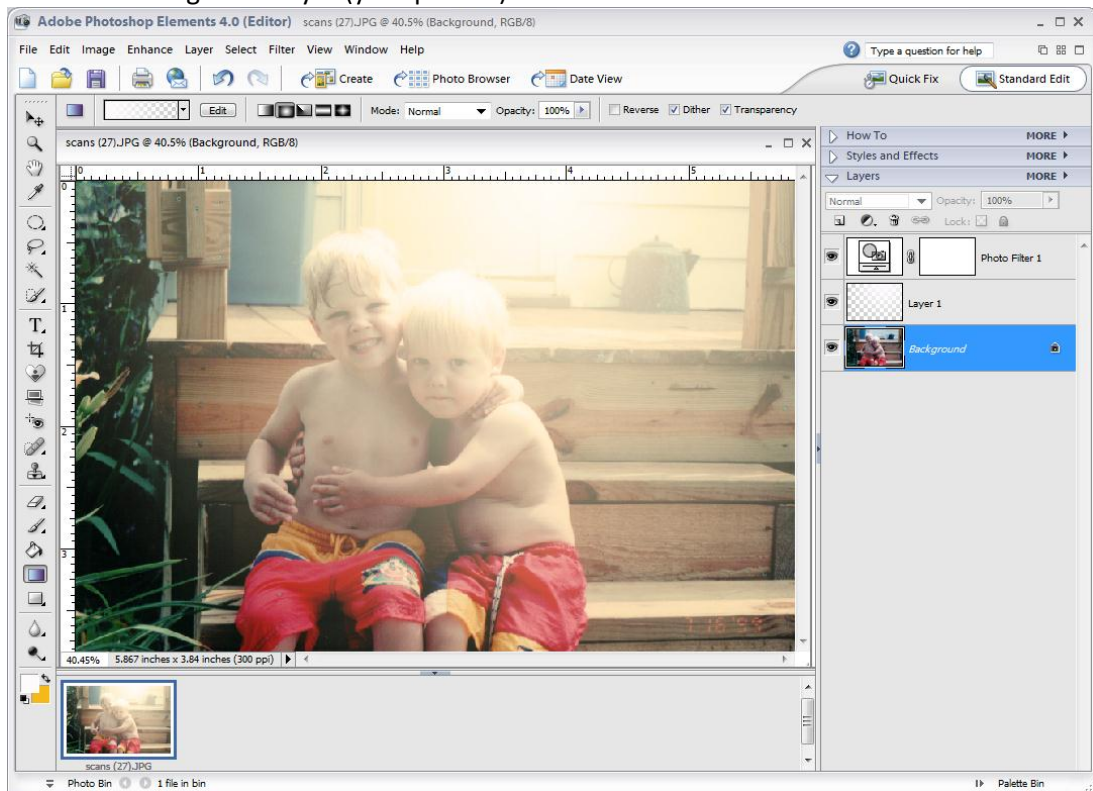


8. You can pick any color, but I prefer Deep Yellow to give your picture a vintage feel. Increase or decrease the Density to your liking.

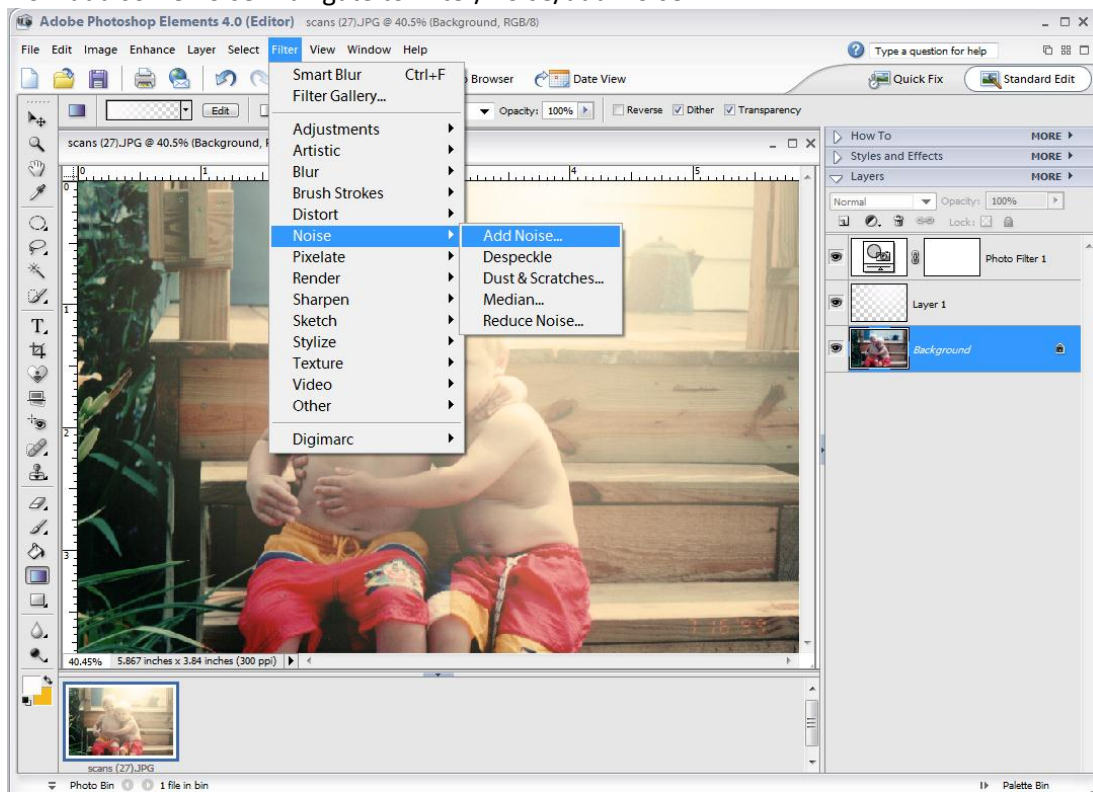


PHSC Photography

9. Select the Background layer (your picture).



10. Now add some noise. Navigate to Filter/Noise/add Noise.

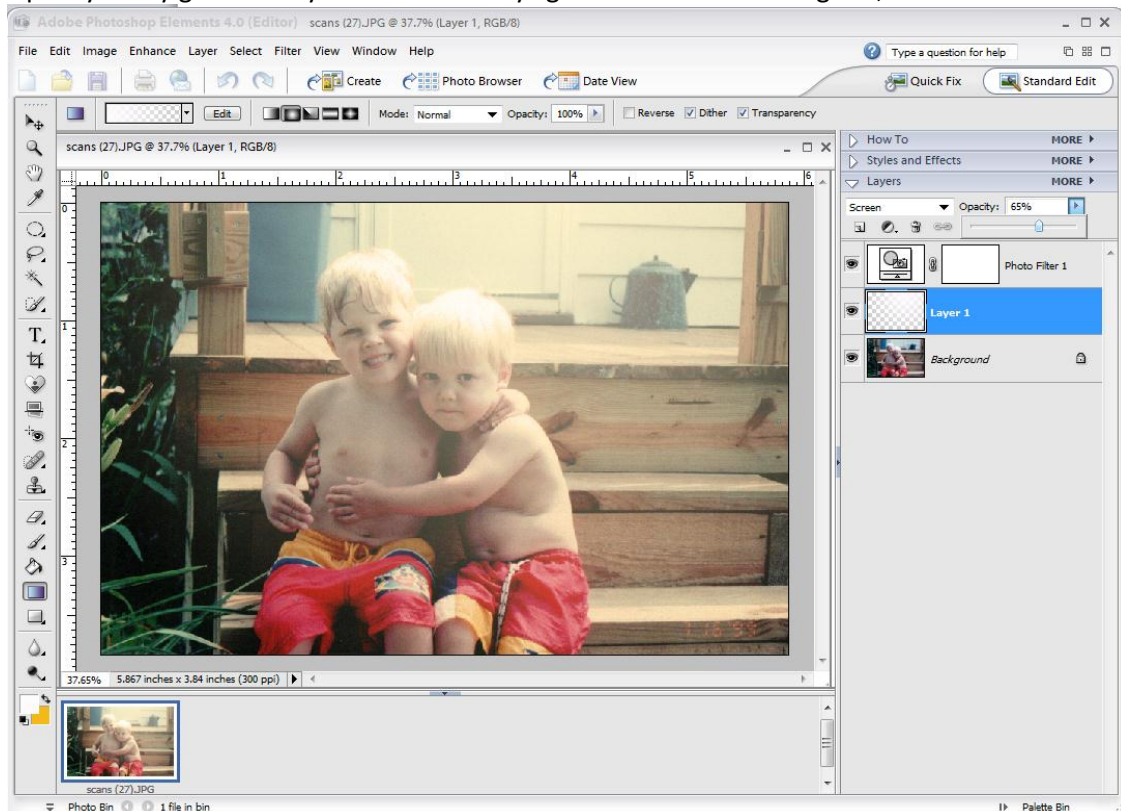


PHSC Photography

11. Adjust the amount of noise you want. Uncheck Monochromatic. It's a color picture, so we want the noise to contain color. Click OK.

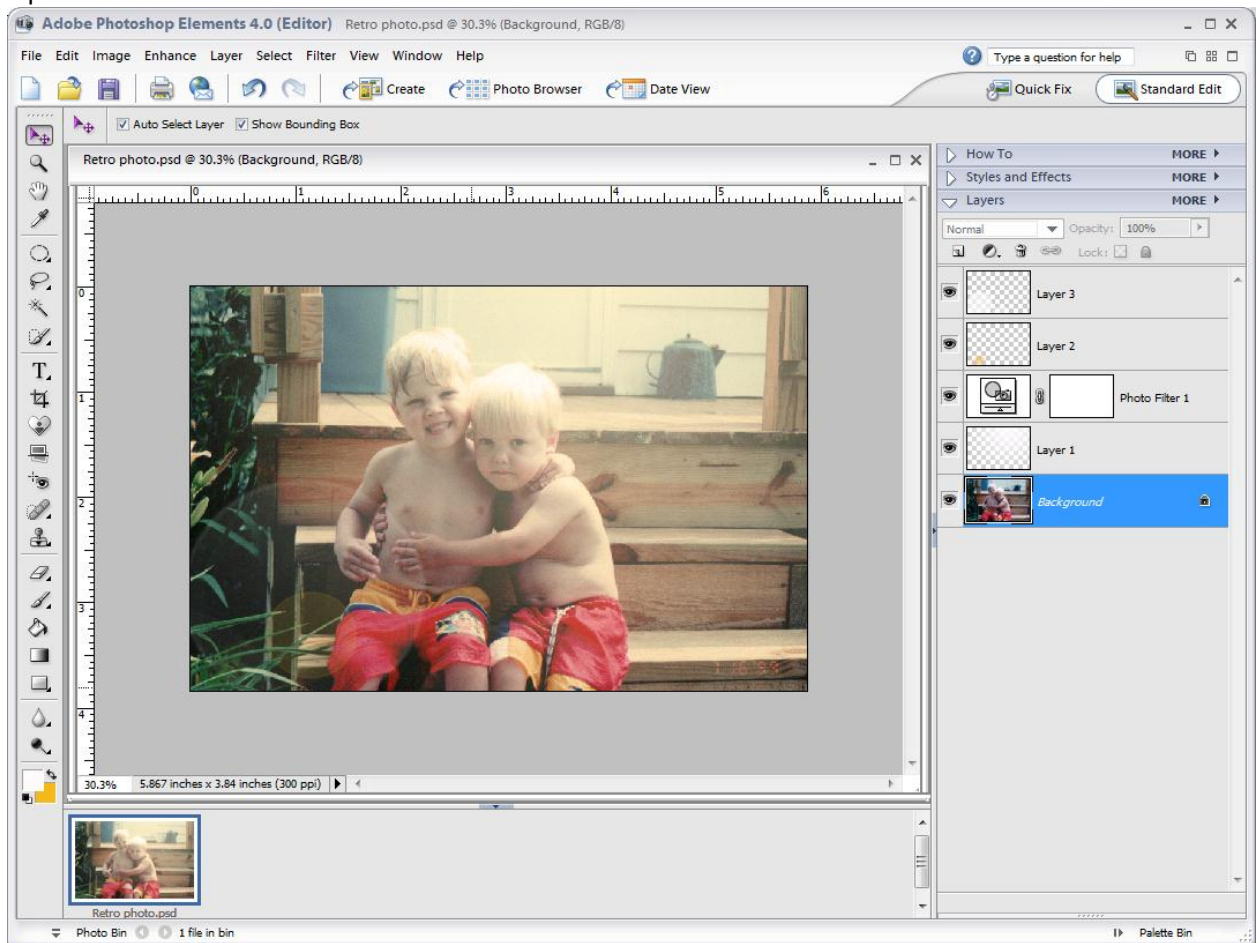


12. If your picture is too light or too dark, adjust the layers by changing their Opacity. I changed the Opacity of my gradient layer. You can always go back and add more grain, too.



PHSC Photography

13. I put some fake lens flares in with some brushes.



14. Now, you can add a polaroid frame or any other type of vintage frame.