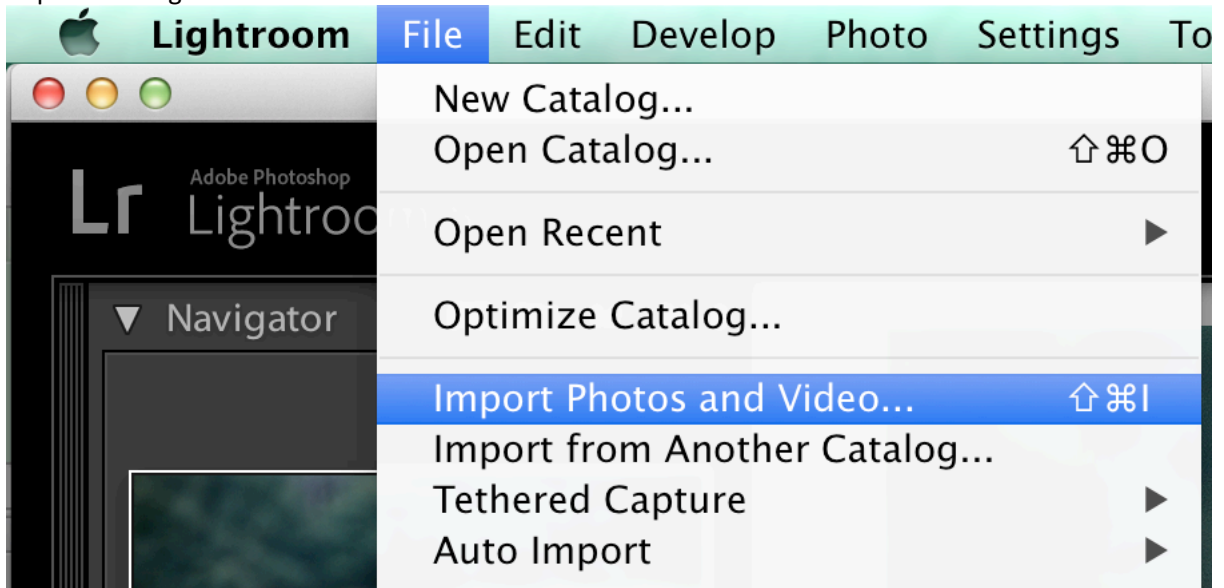




1. Select a high quality and colorful image with a strong focal point that's easy to identify and import it to Lightroom.

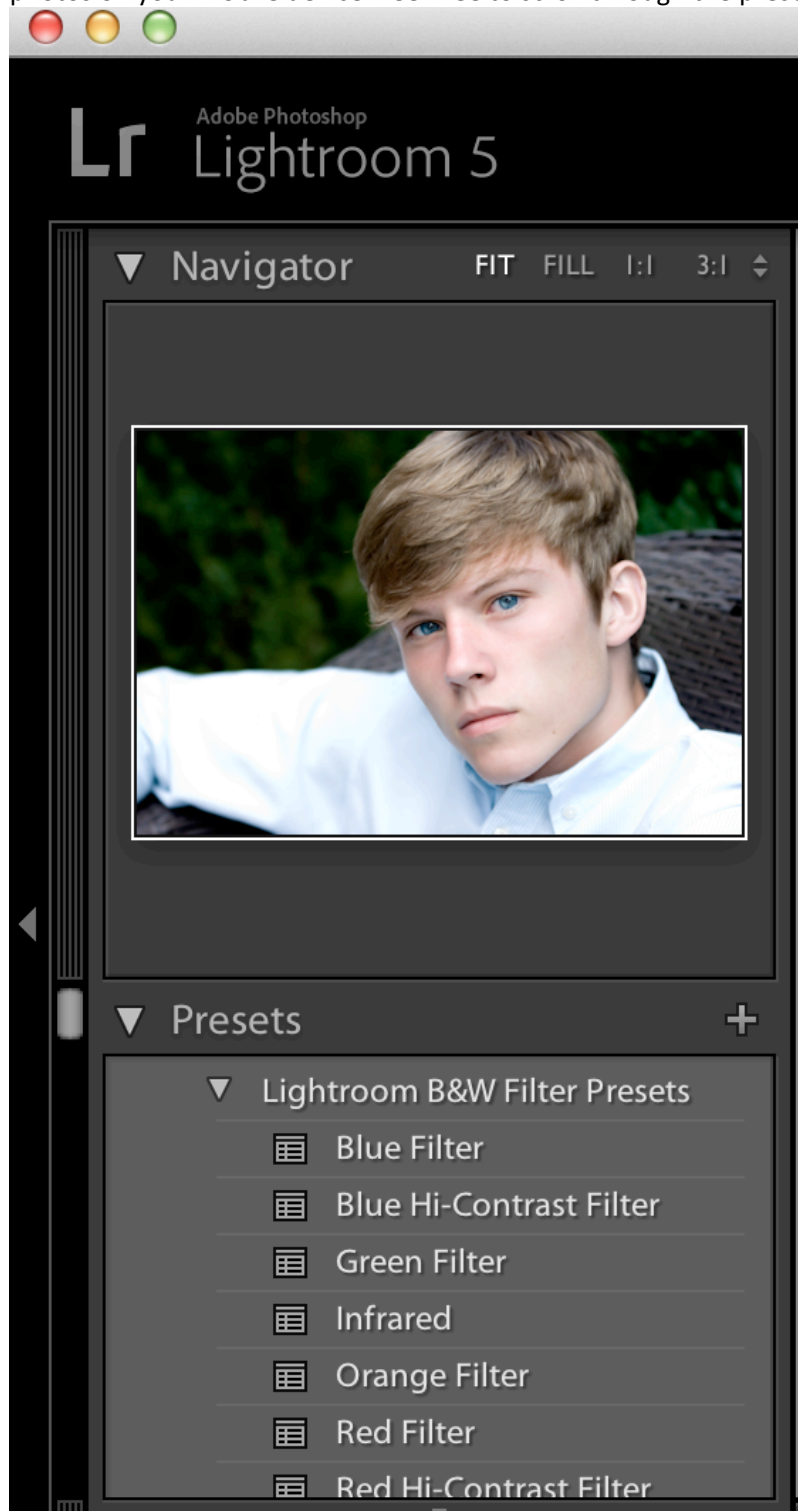


2. Go to the Develop Module. Using the Global Adjustments, enhance your photo so that it's the best it can be.
3. All digital photos need sharpened. Lightroom will sharpen your photo for you but you can add more sharpening or remove sharpening. You do not want to over sharpen your photo.
4. To sharpen your photo, scroll down to the Detail Panel. The panel will give you a preview of your sharpening. Adjust the settings to your liking but do not over sharpen your photo.





5. Lightroom offers “Presets”. Presets are similar to filters that you may have used while editing photos on your mobile device. Feel free to scroll through the presets and select an edit you like.





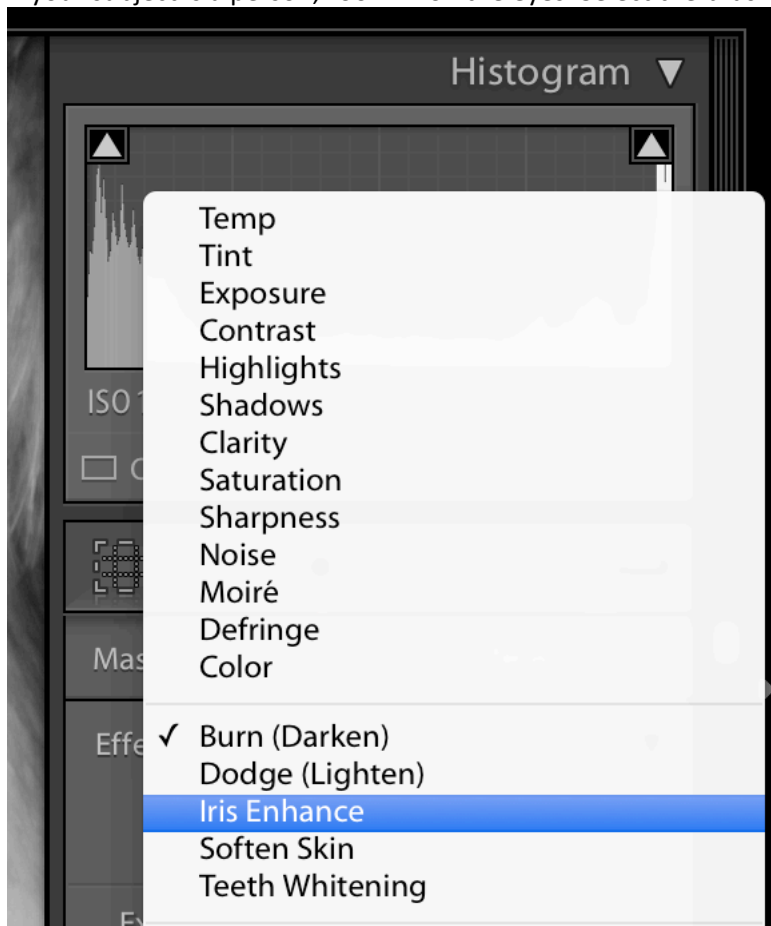
## Black and White

6. Or, you can desaturate your photo (which turns it black and white). To do this, scroll down to the Presence Panel and set Saturation to -100.





7. You'll need to edit more to get the best possible photo and earn the best grade. Experiment with the sliders.
8. If your subject is a person, zoom in on the eyes. Select the brush tool and select Iris Enhance.





## Black and White

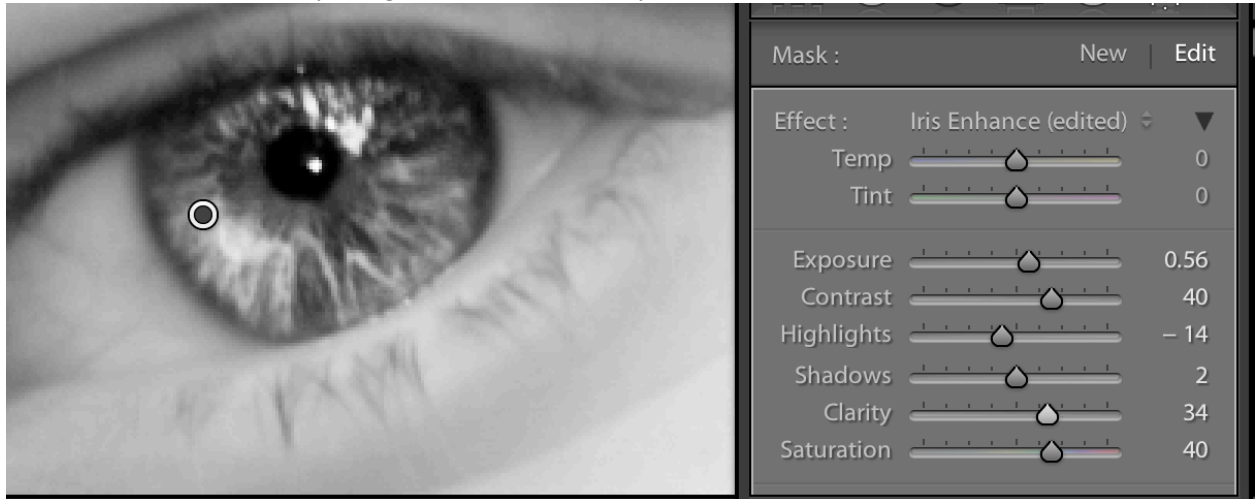
9. Type "o" on your keyboard which will show you where your mask is applied. It will show up in red. Apply the mask to both eyes.





10. Type "o" again to hide the mask, which will reveal the edit.

11. You can control the edit by using the sliders. Be sure your edit looks real.



12. When you are done, export a full resolution your photo to a safe place. Then, export a copy that is sized for the web. Be sure not to overwrite your full resolution copy.

13. Add your web sized copy to your online portfolio for grading.