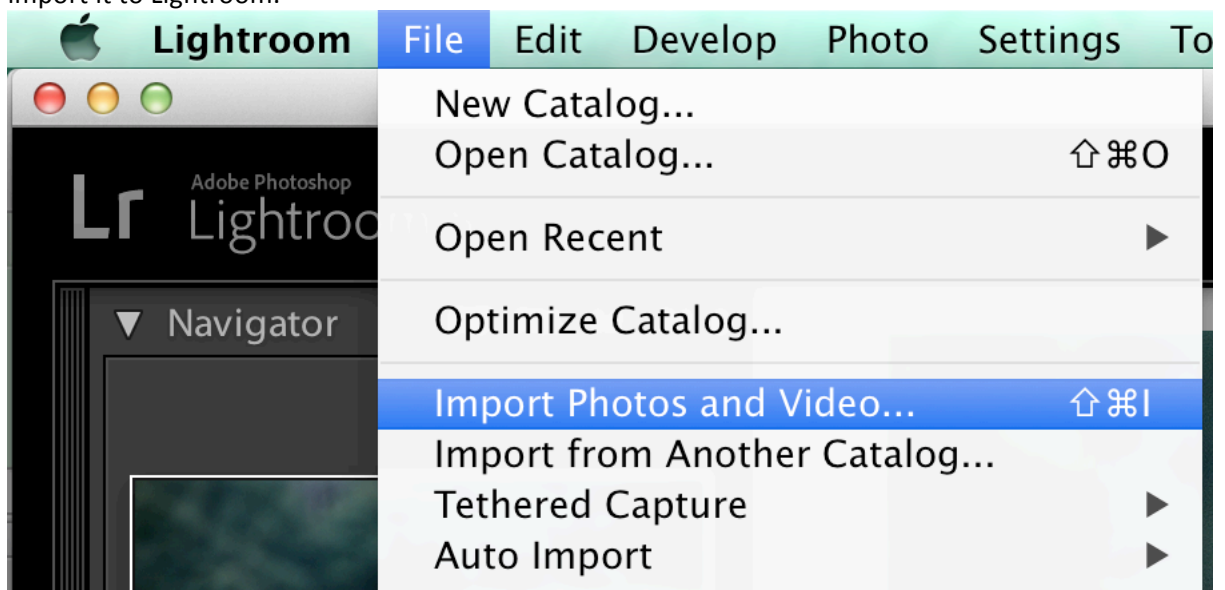


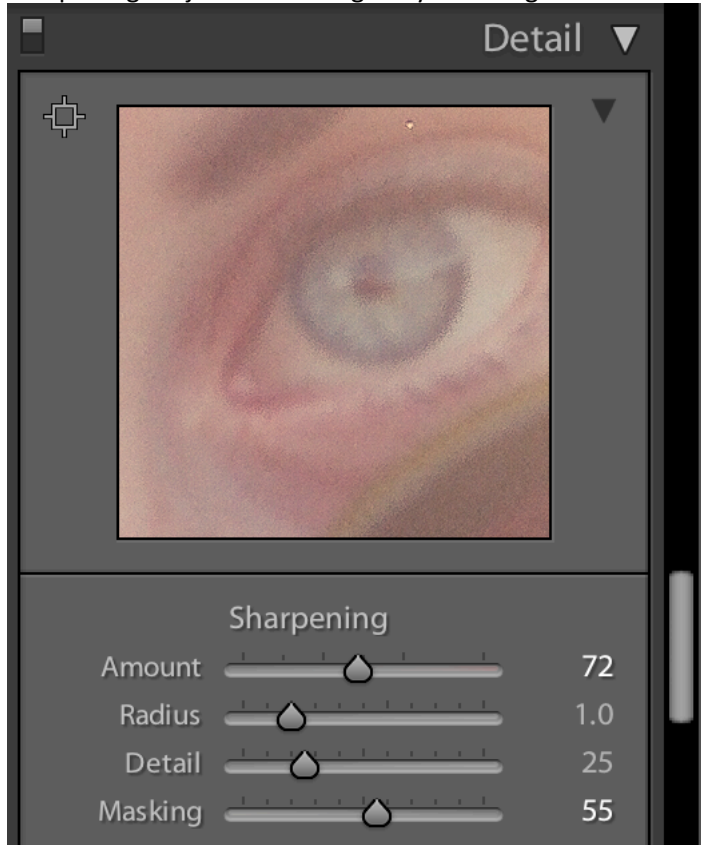
1. Select a high quality and colorful image with a strong focal point that's easy to identify and import it to Lightroom.



2. Go to the Develop Module. Using the Basics Panel, enhance your photo so that it's the best it can be.
3. All digital photos need sharpened. Lightroom will sharpen your photo for you but you can add more sharpening or remove sharpening. You do not want to over sharpen your photo.

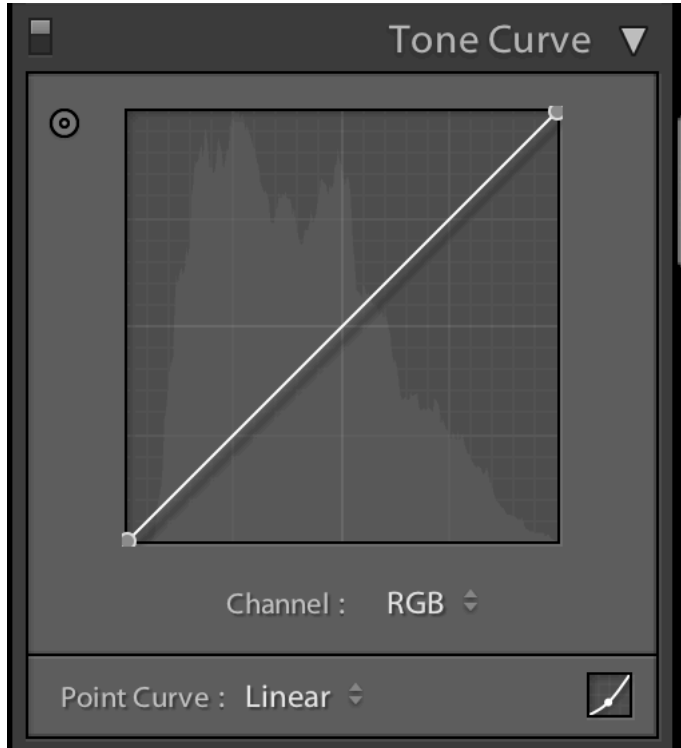


4. To sharpen your photo, scroll down to the Detail Panel. The panel will give you a preview of your sharpening. Adjust the settings to your liking but do not over sharpen your photo.



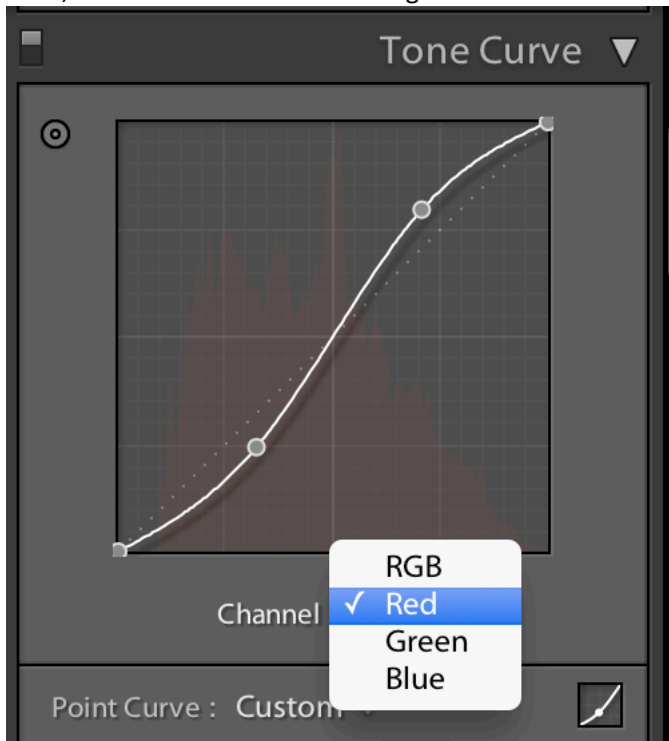


5. To cross process your photo, scroll down to the Tone Curve Panel. Make sure your Point Curve is on Linear.

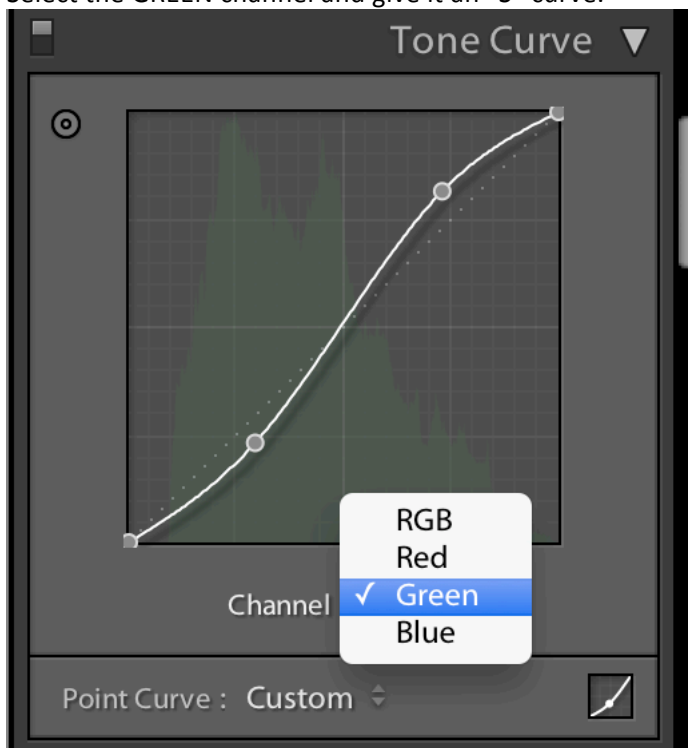




6. Now, select the RED channel and give it an “S” curve.

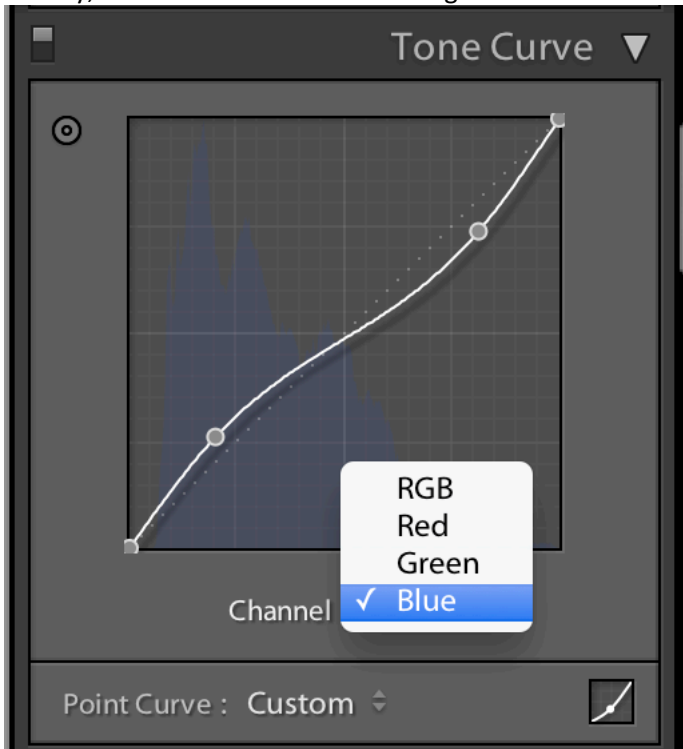


7. Select the GREEN channel and give it an “S” curve.





8. Finally, select the BLUE channel and give it a reverse “S” curve.



9. Here's how my image looks.





Central Photography

Lightroom Tutorial

Cross Process

10. You'll need to edit more to get the best possible photo and earn the best grade. You may need to readjust each channel to get the look you want. You may also need to go back to the Basic Panel and readjust some of your settings. Experiment.
11. When you are done, export a full resolution copy of your photo to a safe place. Then, export a copy that is sized for the web. Be sure not to overwrite your full resolution copy.
12. Add your web sized copy to your online portfolio for grading.